

HiPower Series

120-CELL HALF CUT MONOCRYSTALLINE
SOLAR MODULE

350-370 Watt

STP370S - B60/Wnhm



Features



High module conversion efficiency

Module efficiency up to 20.3% achieved through advanced cell technology and manufacturing capabilities



High PID resistant

Advanced cell technology and qualified materials lead to high resistance to PID



Excellent weak light performance

More power output in weak light condition, such as haze, cloudy, and morning



Lower operating temperature

Lower operating temperature and temperature coefficient increases the power output



Extended load tests

Module certified to withstand front side maximum static test load (5400 Pascal) and rear side maximum static test loads (3800 Pascal) *



Withstanding harsh environment

Reliable quality leads to a better sustainability even in harsh environment like desert, farm and coastline

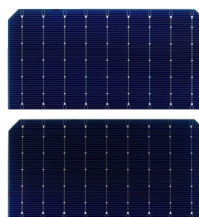
Certifications and standards:
IEC 61215, IEC 61730, conformity to CE



Trust Suntech to Deliver Reliable Performance Over Time

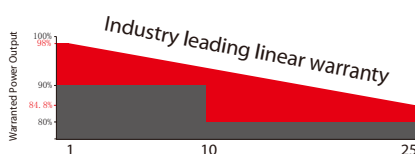
- World-class manufacturer of crystalline silicon photovoltaic modules
- Unrivaled manufacturing capacity and world-class technology
- Rigorous quality control meeting the highest international standards: ISO 9001, ISO 14001 and ISO17025
- Regular independently checked production process from international accredited institute/company
- Long-term reliability tests
- 2 × 100% EL inspection ensuring defect-free modules

Special Cell Design



The unique cell design leads to reduced electrode resistance and smaller current, thus enables higher fill factor. Meanwhile, it can reduce losses of mismatch and cell wear, and increase total reflection.

Industry-leading Warranty based on nominal power



- 98% in the first year, thereafter, for years two (2) through twenty-five (25), 0.55% maximum decrease from MODULE's nominal power output per year, ending with the 84.8% in the 25th year after the defined WARRANTY STARTING DATE.***
- 15-year product warranty
- 25-year linear performance warranty

IP68 Rated Junction Box



The Suntech IP68 rated junction box ensures an outstanding waterproof level, supports installations in all orientations and reduces stress on the cables. High reliable performance, low resistance connectors ensure maximum output for the highest energy production.

* Please refer to Suntech Standard Module Installation Manual for details. **WEEE only for EU market.

*** Please refer to Suntech Product Warranty for details.
made in China & Vietnam.

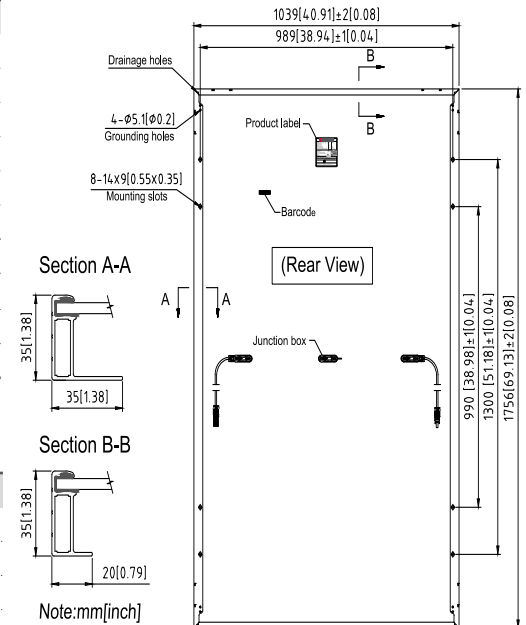
Electrical Characteristics

STC	STPXXS-B60/Wnhm				
Maximum Power at STC (Pmax)	370W	365W	360W	355W	350 W
Optimum Operating Voltage (Vmp)	34.3V	34.1V	33.9V	33.7V	33.5 V
Optimum Operating Current (Imp)	10.79A	10.71A	10.62A	10.54A	10.46 A
Open Circuit Voltage (Voc)	40.9V	40.7V	40.5V	40.3V	40.1 V
Short Circuit Current (Isc)	11.49A	11.42A	11.35A	11.28A	11.21 A
Module Efficiency	20.3%	20.0%	19.7%	19.5%	19.2%
Operating Module Temperature	-40 °C to +85 °C				
Maximum System Voltage	1000 V DC (IEC)				
Maximum Series Fuse Rating	20 A				
Power Tolerance	0/+5 %				

STC: Irradiance 1000 W/m², module temperature 25 °C, AM=1.5;
Tolerance of Pmax is within +/- 5% and tolerances of Voc and Isc are within +/- 5%.

NMOT	STPXXS-B60/Wnhm				
Maximum Power at NMOT (Pmax)	278.2W	274.3W	270.7W	266.8W	263.3 W
Optimum Operating Voltage (Vmp)	32.0V	31.8V	31.6V	31.5V	31.3 V
Optimum Operating Current (Imp)	8.69A	8.62A	8.56A	8.48A	8.42 A
Open Circuit Voltage (Voc)	38.7V	38.5V	38.4V	38.2V	38.0 V
Short Circuit Current (Isc)	9.17A	9.10A	9.04A	8.96A	8.89 A

NMOT: Irradiance 800 W/m², ambient temperature 20 °C, AM=1.5, wind speed 1 m/s.



Temperature Characteristics

Nominal Module Operating Temperature (NMOT)	42 ± 2 °C
Temperature Coefficient of Pmax	-0.36%/°C
Temperature Coefficient of Voc	-0.304%/°C
Temperature Coefficient of Isc	0.050%/°C

Mechanical Characteristics

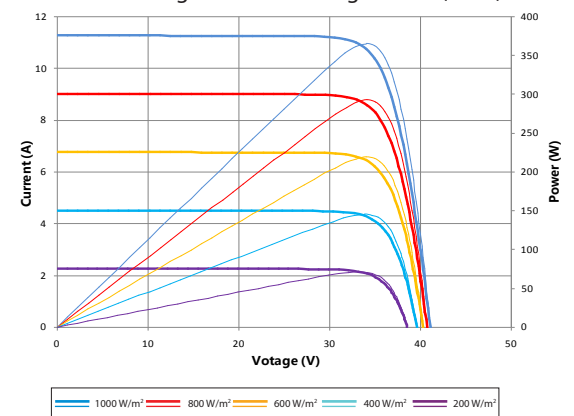
Solar Cell	Monocrystalline silicon 166 mm
No. of Cells	120 (6 × 20)
Dimensions	1756 × 1039 × 35 mm (69.1 × 40.9 × 1.4 inches)
Weight	20.3 kgs (44.8 lbs.)
Front Glass	3.2 mm (0.13 inches) tempered glass
Frame	Anodized aluminium alloy
Junction Box	IP68 rated (3 bypass diodes)
Output Cables	4.0 mm ² , Portrait: (-)350 mm and (+)160 mm in length Landscape: (-)1200 mm and (+)1200 mm in length or customized length
Connectors	Genuine MC4, TL-Cable01
Fire Class Rating	C in accordance with UL 790

Packing Configuration

Container	20' GP	40' HC
Pieces per pallet	31	31
Pallets per container	6	26
Pieces per container	186	806
Packaging box dimensions	1786 × 1130 × 1203 mm	
Packaging box weight	679 kg	

Information on how to install and operate this product is available in the installation instruction. All values indicated in this data sheet are subject to change without prior announcement. The specifications may vary slightly. All specifications are in accordance with standard EN 50380. Color differences of the modules relative to the figures as well as discolorations of/in the modules which do not impair their proper functioning are possible and do not constitute a deviation from the specification.

Current-Voltage & Power-Voltage Curve (370S)



Dealer information

Geelong Solar Energy
27 Nobility st
Moolap
3224
geelongsolarenergy.com.au
info@geelongsolarenergy.com.au

Why Choose Suntech

1 21 GW in 20 Years

Founded in 2001, Suntech is devoted to the R&D and the production of crystalline silicon solar cells and modules for **20** years, and the cumulative historical shipment is exceeded **21**GW.

2 Tier 1 Solar Module Manufacturer with Superior Bankability

Suntech has been ranked one of the world's most bankable PV module brands according to the **Bloomberg New Energy Finance ("BNEF")** "2019 PV Module Bankability Report".

Suntech is the 7th most bankable PV brand worldwide in 2019, with its ranking having climbed 11 places since the 2018 report.

3 Solid Financial Strength

Relying on its solid financial strength, Suntech is authorized **5A** rating by **dun&bradstreet**.



4 Innovation Leading Products

▶ HiPro Series



Current
sorting process



Withstanding
harsh environment



IP68 rated
junction box



High
PID resistant

▶ HiPerforma Series



Excellent
weaklight performance



Positive
tolerance



Extended wind
and snow load tests



High module
conversion efficiency

▶ HiPower Series

▶ HISpec Series

5 Trustworthy Reliability by Certificates

Suntech is fully certified by professional third party testing organizations.



6 Excellent Product Quality

Suntech is ranked as a **Top Performer** for a 3rd year in the 2019 PV Module Reliability Scorecard, published by PVEL in partnership with DNV-GL.



7 Security Guaranteed

Suntech modules are covered by **15** years product warranty and **25** years performance warranty, **30** years for double glass modules. (Australia market)



Through a comprehensive quality management to provide global customers with real-time after-sales service.

Munich RE granted Suntech warranty back up insurance after extreme vetting.

8 Global for Local

Suntech's business footprint covers more than **90** countries around the world, with more than **1500** industry-leading partners.





**EuPD Research Sustainable Management GmbH
congratulates**

Wuxi Suntech Power Co., Ltd.

on the **Award** of

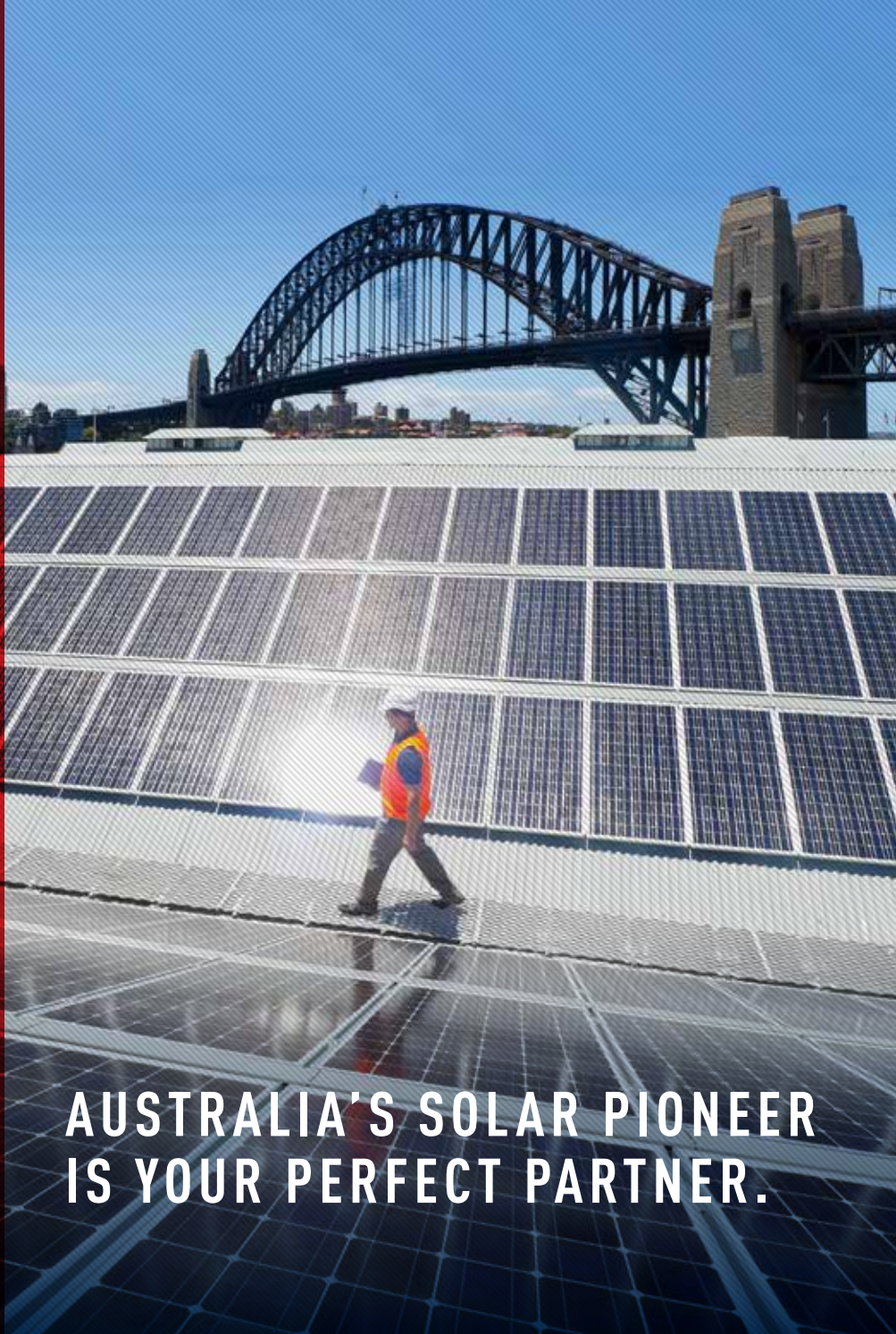
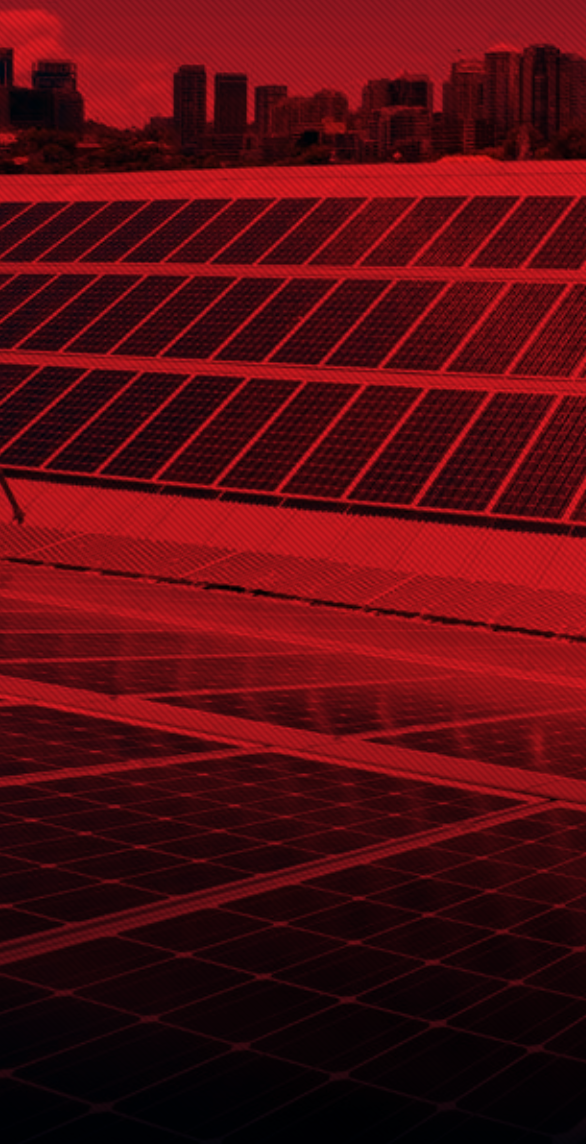
Top Brand PV Australia 2020

Category **Modules**

The company Wuxi Suntech Power Co., Ltd. ranks among the top PV brands in Australia according to the results of a survey carried out by EuPD Research among installers on brand awareness, customers' choice and distribution.

A handwritten signature in black ink, appearing to read "M. Hoehner".

Markus A. W. Hoehner
CEO



**AUSTRALIA'S SOLAR PIONEER
IS YOUR PERFECT PARTNER.**

A LITTLE ABOUT US.

Founded in 2001 by an Australian with a UNSW doctorate in solar power technology, our history in Australia is unique. We are the only global PV manufacturer founded by an Australian University graduate, and have supplied the Australian market longer than any other manufacturer.

OUR AUSTRALIAN STORY

As well as an international initiative, SunTech have a clear focus on Australia's energy, producing industry-leading solar modules for residential, commercial and utility applications. We are proud to be associated with locally developed ideas that are making a difference. SunTech understands Australian conditions and strives for efficiency and consistency.

SunTech has initiated research and development partnerships with multiple Australian Universities having so far donated \$30 million AUD. Such institutions include UNSW, ANU and Monash University. Our collaboration with these leading research organisations has ensured our position as global leaders at the forefront of solar cell and module design efficiency.



DESIGNED FOR AUSTRALIAN CONDITIONS

Suntech has vast experience in solar installations in both large and smaller projects in Australia. Not only are our products made to deal with extreme Australian conditions, Suntech customers also benefit from locally based customer service, engineering and warranty support.



EXCELLENT MODULE EFFICIENCY



ELECTRO-LUMINESCENCE TESTED



POWER OPTIMISED CURRENT SORTING



WITHSTANDS HARSH ENVIRONMENTS



TESTED FOR EXTREME WIND & SNOW



EXCELLENT WEAK LIGHT PERFORMANCE



HIGH PERFORMANCE IN HEAT & HUMIDITY



ENHANCED HAIL TEST

QUALITY FOCUSED

With over 20 years of operation in Australia, Suntech has a proven track record when it comes to a company wide dedication to quality.

The quality of our panels and their performance is fully supported

by rigorous, on-going testing, which occurs at every stage of the manufacturing process. Suntech panels are submitted to no less than 52 internal assessments, in addition to third party checks.



CONTACT US NOW TO IMPROVE YOUR SOLAR PERFORMANCE & RELIABILITY

suntech-power.com.au

SUNTECH



AUSTRALIA'S SOLAR PIONEER
IS YOUR PERFECT PARTNER.